

## Photos



Enclosed garden



The pine bedroom



The Stencil bedroom



kitchen



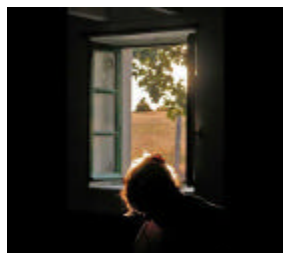
Front room



Lane way, river 100m



Sunrise from River



Sunset from Kitchen



Another full day!

## Costs

Months	£ <sup>*1</sup> <sup>*2</sup> <sup>*3</sup>
Mar—Oct	220-600
Nov—Feb	Closed

\*1: Linens extra, bedding and towels are 10 Euros per person, paid on arrival to house keeper  
 \*2: 100 euro refundable deposit for damages  
 \*3: 20 pound electricity levy is charged for each week in March and October

## Discounts

See website for discounts

## Our Service

We provide a local meet and greet service.

## More information and booking

If you have any queries or would like to make a booking please email using the contact below. We will provide additional contact details with our reply.

Email : [info@la-barche.com](mailto:info@la-barche.com)

Web: [www.la-barche.com](http://www.la-barche.com)

# Welcome to La Barche

French holiday cottage for rent

[www.la-barche.com](http://www.la-barche.com)



## SLEEPS 6

A delightful restored detached Vendean cottage situated a mile from the historic village of Maillezais. In the heart one of France's hidden jewels, a wet-land reserve known as the 'Venise Verte' (Green Venice).

Cut through ancient marshlands and meandering through canopies of overhanging willow, beech and poplar, this magical network of canals and rivers simply enchants.

You can take boat trips, rent bicycles or walk along the canal paths and over the seemingly endless picturesque bridges from villages that seem to have changed little this century.

The house has two spacious open plan bedrooms, and will sleep six. There is a double bed in each room, and two single beds that can be moved as needed between rooms.



## Amenities



Wood Burning stove



Linen & towels for hire



Cot available



Short breaks all year



Enclosed garden



Barbeque



Washing machine



Downstairs WC



Parking available



Rural



Open fire

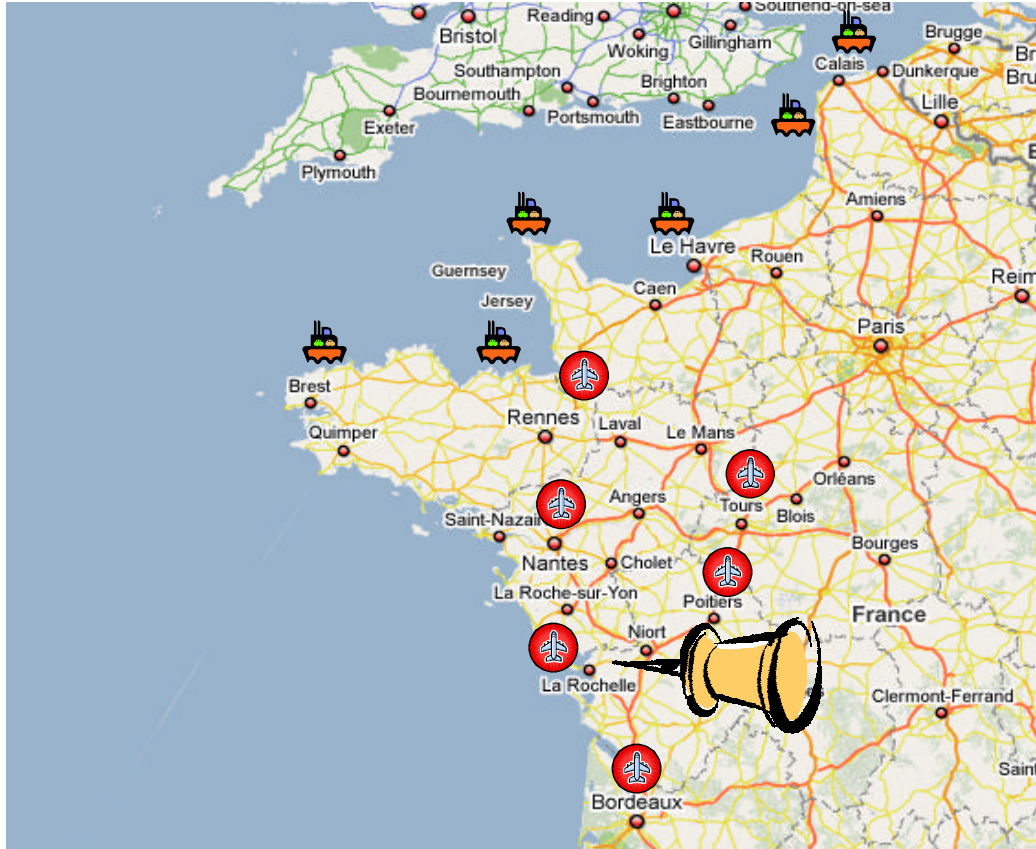


Shower



Microwave

## Location



## Getting there

As you can see from the map, there are a host of options, from sailing to flying. The nearest airport is La Rochelle within an hours drive, Nantes and Poitiers are just an hour from the house.

If you need advice or have any questions please feel free to ask us ([info@la-barche.com](mailto:info@la-barche.com)).

Note: We can also arrange late arrivals if needed.

## Some Activities

### Maillezias (local village)

- The [Abbey at Maillezais](#) a ruin now, yet amazingly much remains of the structure. The Abbey was an important place, established in the 11 century, it also was the home for a while to the infamous Rabelais. Chants are blasted from hidden speakers to add to the authenticity as actors dressed in habits roam around and provide guides as you journey through the ruins.
- Le [Syndicat d'Initiative](#) (Tourist Office) English is spoken; access to current events, including local festivals, local village market days, religious services, they can even make bookings for you.
- [Promenade en Barque](#) Taking a boat trip in the Venise Verte. Another must, these trips are either accompanied or not. Many of the local villages offer such excursions, the one in Maillezais takes you around the boundary of the ruined Abbey - allow 2-3 hours.

### Towns of Interest

- [Niort](#) Fine Norman castle- restaurants- excellent food market (Saturday mornings) - Cathedral.
- [La Rochelle](#) Picturesque medieval port and City walls; great fish restaurants, good shopping, museums, biggest aquarium in Europe, cinemas (English speaking), water sports.
- [Vouvant](#) award winning 'most beautiful villages' in France.
- [Cognac](#) take a tour of one of the many Cognac distilleries.

### Tourist Activities

- [Venise Verte Circuit Touristique Route](#) Road route through the Venise Verte, fully signed. We suggest that you start from Le Mazeau (about 5 mins in the car).
- [Forest of Mervent](#) great for picnics, has a meandering river and reservoir for water sports (swimming, sailing, windsurfing)
- [Zoo at Mervent](#)
- [Puy du Fou](#) A must visit! (<http://www.puydufou.com/>) a wonderful theme park. See the [Cinenscnie](#), the worlds biggest night time show. **BOOK EARLY!**
- [Futuroscope](#) ([www.futuroscope.com](http://www.futuroscope.com)) A science based theme park. Something for all the family.

### Beaches (*many beaches are accessible, below are a few we return to again and again*)

- [Les Conches](#) Our favourite! about 45 minutes in the car
- [La Tranche Sur Mer](#) Centred in the middle of a line of neighbouring beaches; golden sands for as far as the eye can see.

### Other

- Cycling (rentals available in most villages including the Maillezais)
- Fishing
- Horse Riding
- Wind Surfing